

# ELKAY®

## SPECIFICATIONS

### No Lead SwirlFlo® Drinking Fountain Wall Mount – Fully Exposed Barrier-Free Access Model EDFPB(V)114C and EDFPBM(V)114K

#### PRODUCT SPECIFICATION

Wall-mounted drinking fountain constructed of #18 gauge, 300 series stainless steel polished to a lustrous satin finish with high shined outer edge. #16 gauge, type 304 tubular stainless steel support arm incorporates a recess to be integrated with basin.

Contoured basin minimizes splashing and has exclusive Flexi-Guard® Safety Bubbler to prevent accidental mouth injuries. Keyed in location to prevent rotation. Fully functional, vandal-resistant front push button is easy to operate. Flow regulator provides constant stream from 20 to 105 psi water pressure.

Complies with the requirements of A.D.A. (American's with Disabilities Act) when properly installed.

#### NO LEAD DESIGN

**THIS DRINKING FOUNTAIN COMPLIES WITH THE LEAD-FREE REQUIREMENTS OF THE U.S. SAFE DRINKING WATER ACT AND ALL STATE LAWS.**

Elkay Drinking Fountains are manufactured with a waterway system utilizing copper components and lead-free material.

This fountain is certified by WQA to lead-free compliance including NSF/ANSI 61 and 372.



MODEL EDFPB114C

#### CONSTRUCTION

**EDFPB114C** furnished complete with Flexi-Guard® Safety bubbler and fully functional vandal-resistant front push button, flow regulator (20-105 psi). No trap furnished. MPW101 or ML100 can be ordered separately.

**EDFPBV114C** furnished complete with one-piece, heavy-duty construction, vandal-resistant bubbler and fully functional vandal-resistant front push button, flow regulator (20-105 psi). No trap furnished. MPW101 or ML100 can be ordered separately.

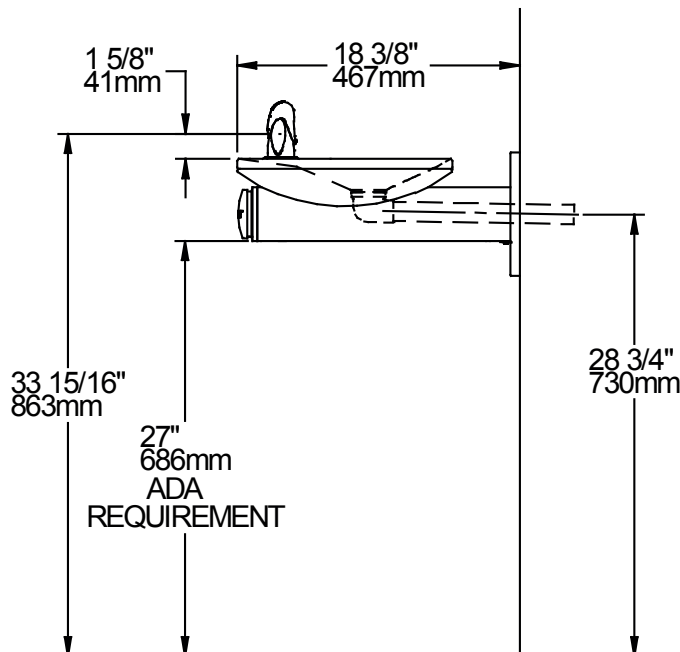
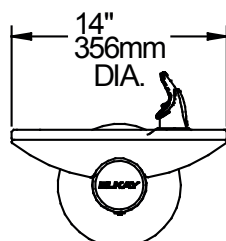
**EDFPBM114K** furnished complete with Flexi-Guard® Safety Bubbler and fully functional vandal-resistant front push button, flow regulator (20-105 psi). No trap furnished. (MPW101 In-wall mounting plate carrier included).

**EDFPBMV114K** furnished complete with one-piece, heavy-duty construction, vandal-resistant bubbler and fully functional vandal-resistant front push button, flow regulator (20-105 psi). No trap furnished. (MPW101 In-wall mounting plate carrier included).

#### ACCESSORIES

**MPW101** In-wall mounting plate carrier accessory.

**ML100** Optional in-wall support legs for use with MPW101.



FINISHED FLOOR

*This specification describes an Elkay product with design, quality and functional benefits to the user. When making a comparison of other producer's offerings, be certain these features are not overlooked.*

In keeping with our policy of continuing product improvement, Elkay reserves the right to change specification without notice. Please visit [elkay.com](http://elkay.com) for the most current version.

2222 Camden Court  
Oak Brook, IL 60523  
630-572-3192  
[elkay.com](http://elkay.com)

© 2016 Elkay  
SPEC00455 (08/2016)

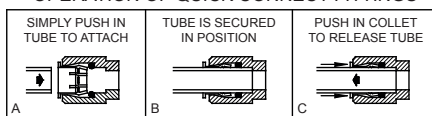
**No Lead SwirlFlo® Drinking Fountain**  
**Wall Mount – Fully Exposed**  
**Barrier-Free Access**  
**Model EDFPB(V)114C and EDFPBM(V)114K**

**ELKAY®**  
**ROUGH-IN DIMENSIONS**

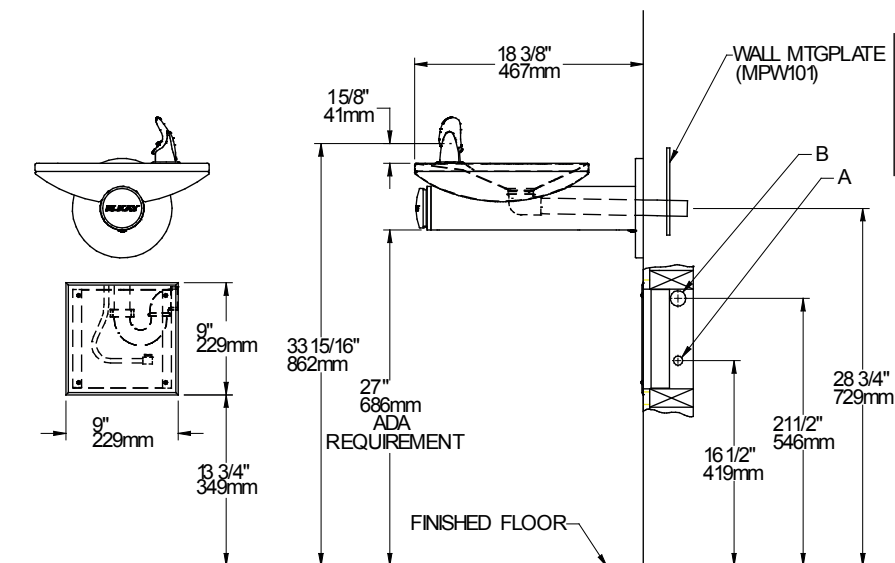
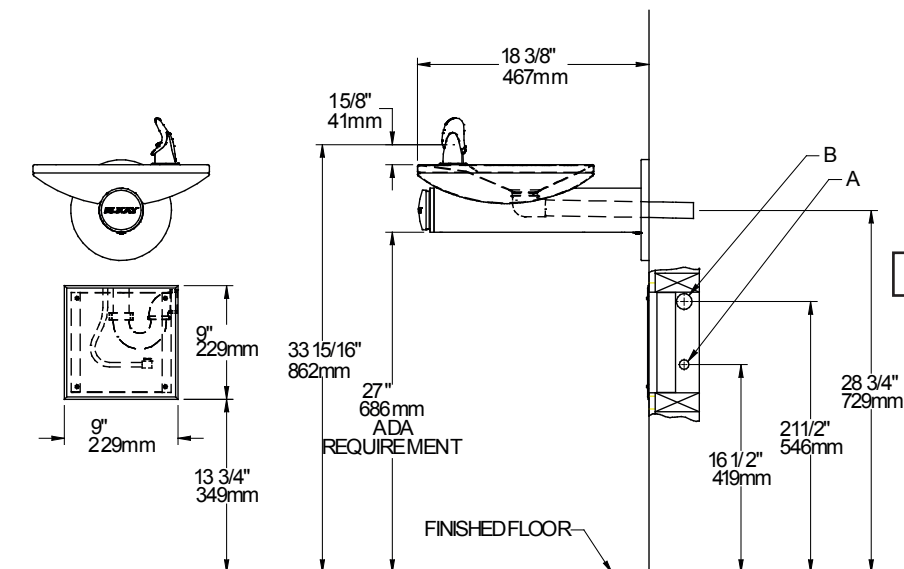
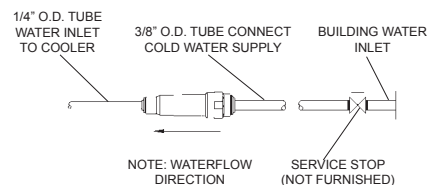
**INSTALLER NOTE**

THIS DRINKING FOUNTAIN IS FURNISHED WITH A BUBBLER AND VALVE INCLUDING ALL CONNECTING FITTINGS WHICH ARE MANUFACTURED OF COMPLETELY LEAD FREE MATERIAL. SHUT OFF VALVE (NOT FURNISHED) TO ACCEPT 3/8" O.D. UNPLATED COPPER TUBE.

**OPERATION OF QUICK CONNECT FITTINGS**



PUSHING TUBE IN BEFORE PULLING IT OUT HELPS TO RELEASE TUBE



Job Name: \_\_\_\_\_

Model: \_\_\_\_\_ Qty. \_\_\_\_\_

Contact: \_\_\_\_\_

Approval Signature: \_\_\_\_\_

Notes: \_\_\_\_\_

**LEGEND:**

A = Recommended water supply location 3/8" O.D. unplated copper tube connect  
 B = Recommended location for waste outlet 1-1/4" O.D. drain