

ELKAY®

SPECIFICATIONS

EZH2O® Bottle Filling Station Mechanical Activation, Non-Filtered Surface Mount Model EMASMB

PRODUCT SPECIFICATION

Surface Mount bottle filling station designed for installations without the need for electricity. Shall include battery operated Green Ticker™ displaying count of 20 oz. plastic bottles saved from waste. Bottle filler shall provide 1.0 gpm flow rate non-filtered, with laminar flow to minimize splashing. Shall include integrated silver ion antimicrobial protection in key areas. Unit shall meet ADA guidelines. Unit shall be a Lead-free design which is certified to NSF/ANSI 61 and 372 and meets Federal and State low-lead requirements. Unit is WRAS approved.

STANDARD FEATURES

- Complete mechanical water activation and function. No electrical connection required.
- Quick Fill Rate of 1 gallon per minute.
- Integrated Silver Ion Anti-microbial Protection in key areas.
- Laminar Flow provides minimal splash.
- Real Drain System eliminates standing water.
- No bubbler required.
- Battery operated visual user interface display includes:
 - Innovative Green Ticker™ counts 20 oz. bottles saved from waste.
 - LCD display shows when batteries need replacing.
- Optional remote chiller can be installed within 15 feet of unit to deliver chilled drinking water.

CONSTRUCTION

- Stainless steel bottle filler wrapper with ABS plastic alcove.
- Includes robust hanging bracket for surface mount.

CAPACITIES CHART

| Model | Voltage | Chilling Capacity | Approx Ship Weight |
|--------|--------------------|---------------------------------|--------------------|
| EMASMB | (3 x AA batteries) | N/A unless connected to chiller | 9.9kg |

*The above ratings apply only to the EMASMB unit.
Ratings for the chiller not included.*

Warranty: Water system is warranted for 12 months from date of installation or 18 months from factory shipment, whichever date falls first.



Model EMASMB

CERTIFICATIONS / STANDARDS

- ADA Compliant
- NSF/ANSI 61 and 372 Certified
- WRAS



This specification describes an Elkay product with design, quality and functional benefits to the user. When making a comparison of other producer's offerings, be certain these features are not overlooked.

EZH2O® Bottle Filling Station

Mechanical Activation, Non-Filtered

Surface Mount Model EMASMB

ELKAY®

ROUGH-IN DIMENSIONS

IMPORTANT!

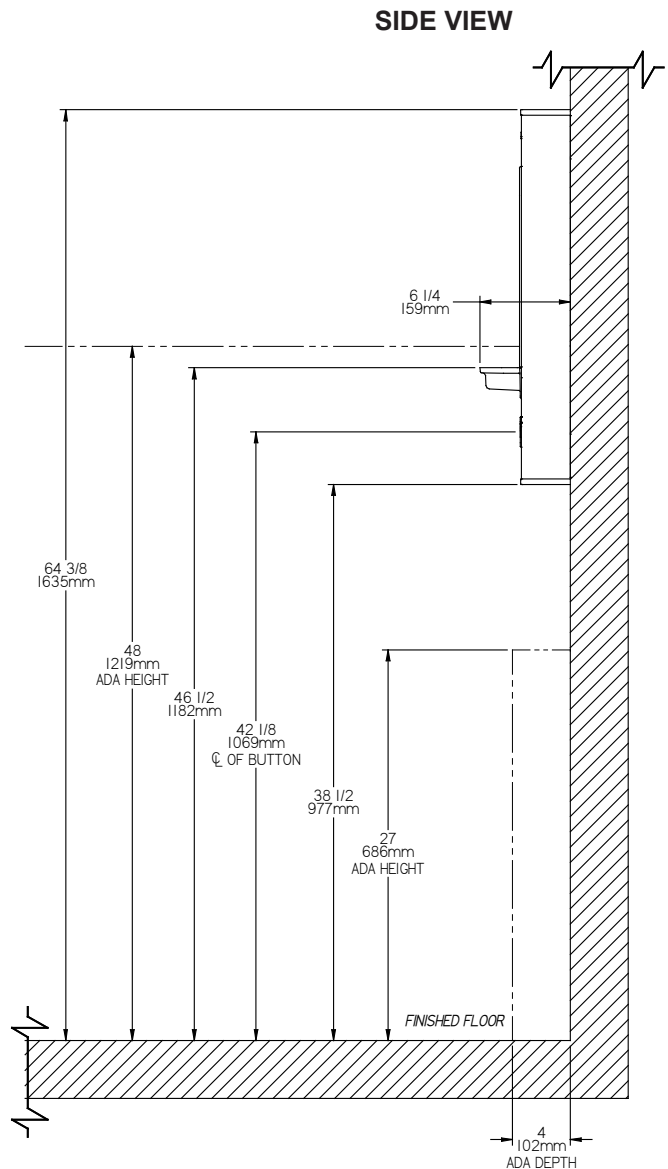
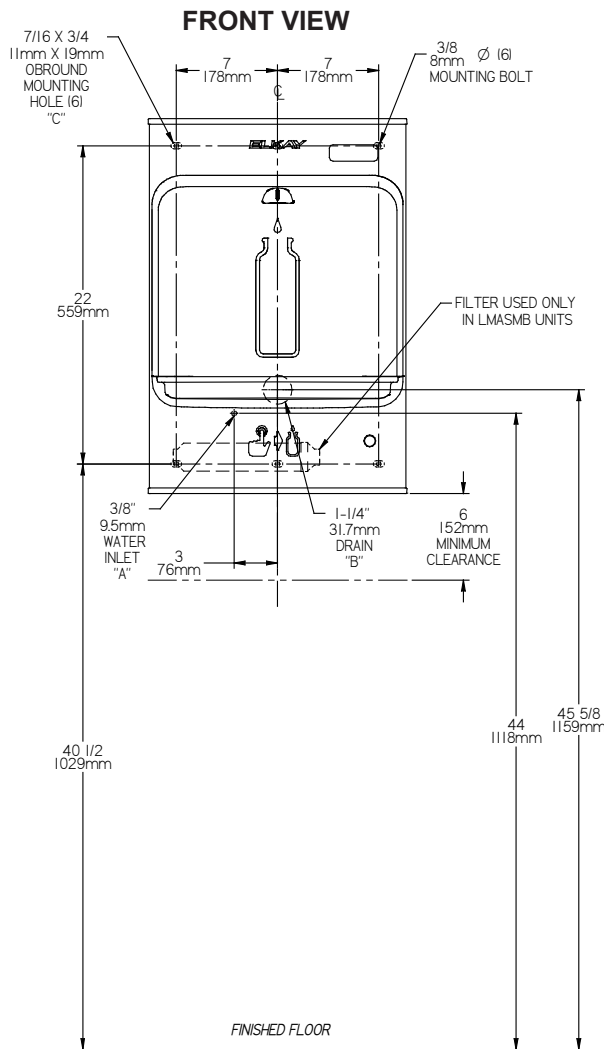
INSTALLATION NOTES:

- Ensure wall is structurally sound to bear the loads imparted by the Surface Mount Bottle Filler.

ELECTRICAL

EZH2O equipped with (3) AA batteries for Green Ticker™ operation.

ADA Stand Alone Mounting



LEGEND:

A = RECOMMENDED WATER SUPPLY LOCATION;
1/2" IPS MAXIMUM PIPE SIZE.
SERVICE STOP VALVE NOT FURNISHED.

B = RECOMMENDED WASTE LOCATION.
WASTE SHOWN IN WALL BUT MAY BE BEHIND WALL.
OUTLET 1-1/4" O.D. (TRAP NOT FURNISHED)

C = 7/16" X 3/4" OBSHOUND MOUNTING HOLES FOR FASTENING
BACKPLATE TO WALL.

| | |
|---------------------|------------------|
| Job Name: | _____ |
| Model: | _____ Qty. _____ |
| Contact: | _____ |
| Approval Signature: | _____ |
| Notes: | _____ |

EZH2O® Bottle Filling Station

Mechanical Activation, Non-Filtered

Surface Mount Model EMASMB

ELKAY®

ROUGH-IN DIMENSIONS

IMPORTANT!

INSTALLATION NOTES:

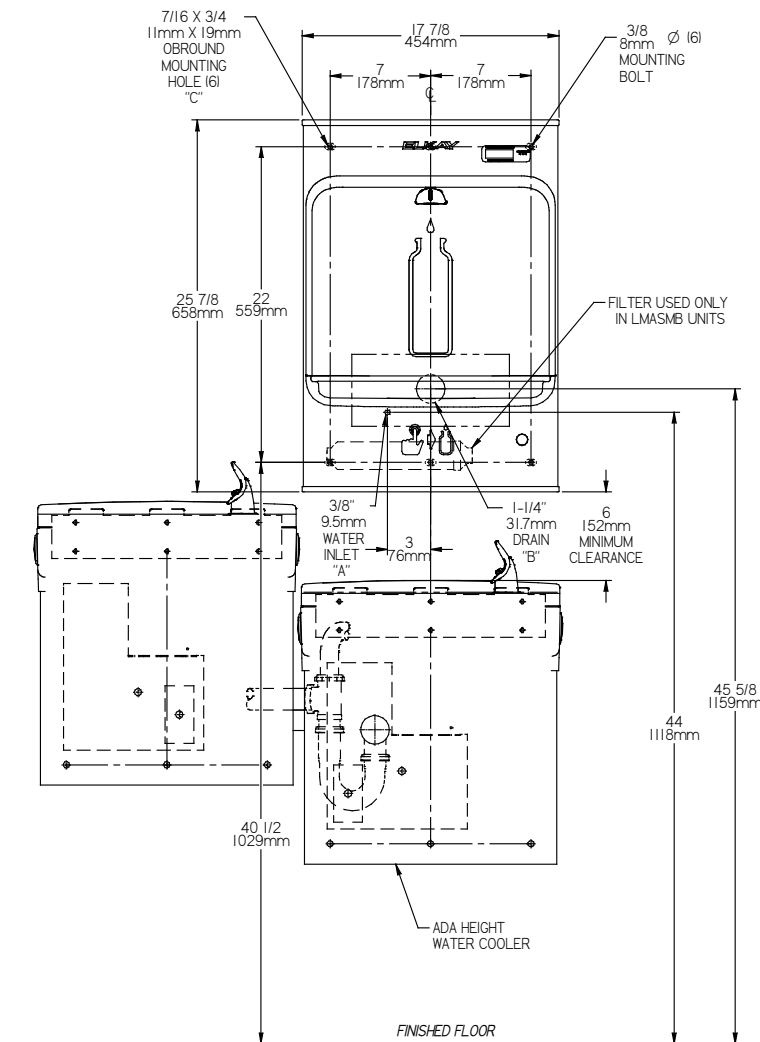
- Ensure wall is structurally sound to bear the loads imparted by the Surface Mount Bottle Filler.

ELECTRICAL

EZH2O equipped with (3) AA batteries for Green Ticker™ operation.

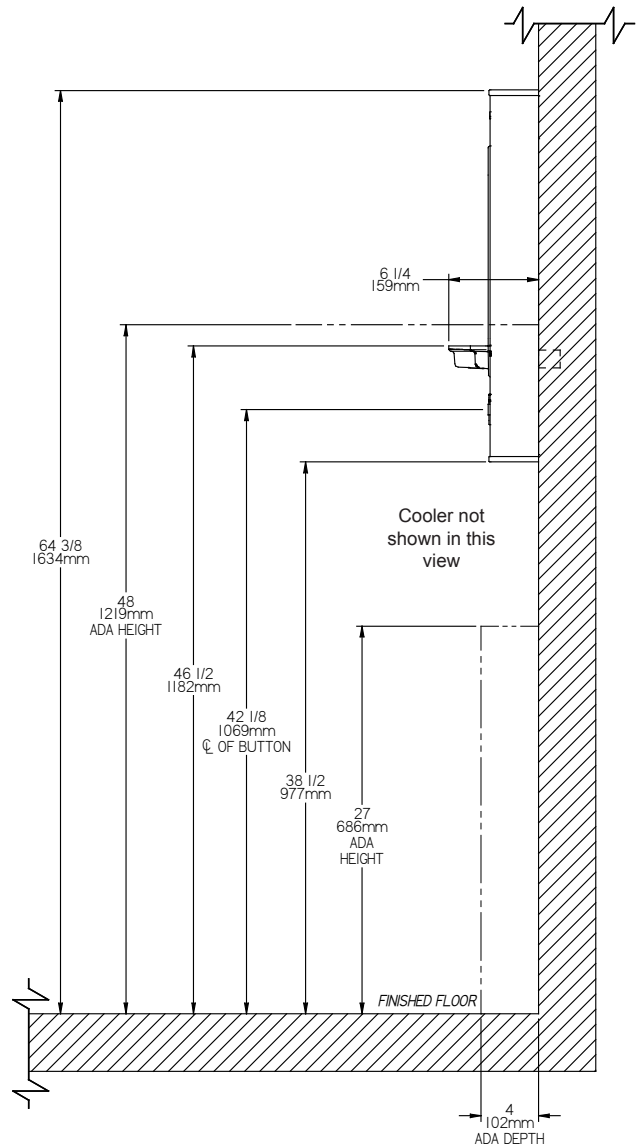
ADA Above Cooler Mounting

FRONT VIEW



REDUCE HEIGHT BY 3 INCHES FOR INSTALLATION ABOVE CHILDRENS ADA COOLER

SIDE VIEW



LEGEND:

A = RECOMMENDED WATER SUPPLY LOCATION;
1/2" IPS MAXIMUM PIPE SIZE.
SERVICE STOP VALVE NOT FURNISHED.

B = RECOMMENDED WASTE LOCATION.
WASTE SHOWN IN WALL BUT MAY BE BEHIND WALL.
OUTLET 1-1/4" O.D. (TRAP NOT FURNISHED)

C = 7/16" X 3/4" OBOURD MOUNTING HOLES FOR FASTENING
BACKPLATE TO WALL.

| | |
|---------------------|------------------|
| Job Name: | _____ |
| Model: | _____ Qty. _____ |
| Contact: | _____ |
| Approval Signature: | _____ |
| Notes: | _____ |